

**1. READ AND WRITE** – Przeczytaj wiadomości. Uzupełnij je brakującymi zdaniami a-e.

**1a Read the messages. Complete them with the missing parts.**

1

Julia  
I've gone to the  
cinema. I've had my  
dinner. c  
love  
Tim

2

Betsy  
I haven't booked a room  
for the Finance meeting on  
Wednesday. We can't get  
room 7. Someone else has  
booked it. \_\_\_\_\_  
Paul

3

Everyone  
The photocopier isn't working. Please don't  
use it. \_\_\_\_\_  
Kate

4

Mandy  
I've gone to the sports  
centre.  
Fay's coming round at 8  
o'clock for her bag. \_\_\_\_\_  
David  
xx

5

Bill  
Message from Jackie.  
She's missed the  
train, so she's going  
to be late for the  
meeting. \_\_\_\_\_  
Abigail

- a I've put it under the table in the hall. See you later.
- b Do you want a smaller room, or can we have the meeting on Thursday?
- c I've left some for you in the oven. See you later.
- d The next train isn't until 11.30, so don't wait for her.
- e I've phoned the engineer. He's coming tomorrow morning.

## 2. VOCABULARY - TRANSPORT



1 a train



2 a bus



3 a coach



4 a motorbike



5 a tram



6 a boat



7 a plane



8 a taxi



9 a ferry



10 the underground



11 a station



12 a bus stop



13 a bus station



14 an airport



15 a taxi rank

Wysłuchaj nagrania.

Jakiego środka transportu używają usłyszane osoby?

Zakreśl w kółko wybraną odpowiedź.

- 1 They're travelling by *boat* / *plane*.
- 2 They're going by *underground* / *plane*.
- 3 They're waiting for the *tram* / *train*.
- 4 They're waiting for the *train* / *ferry*.
- 5 They're going by *bus* / *motorbike*.
- 6 They're travelling by *underground* / *coach*.
- 7 They're waiting for the *boat* / *bus*.
- 8 They're waiting for the *taxi* / *tram*.

### 3. ENGLISH FOR EVERYDAY LIFE – ASKING THE WAY

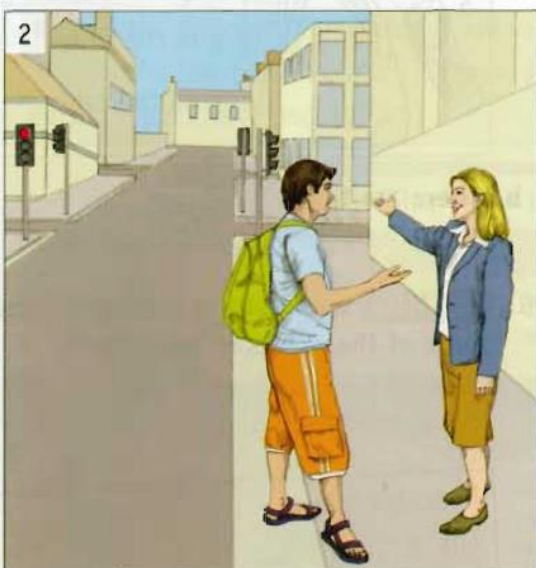
Przeczytaj dialogi. Przetłumacz je na język polski.



**Woman** Excuse me. How do I get to the Midland Hotel, please?

**Man** Go down here to the traffic lights. Turn right and it's on the left.

**Woman** Thank you very much.



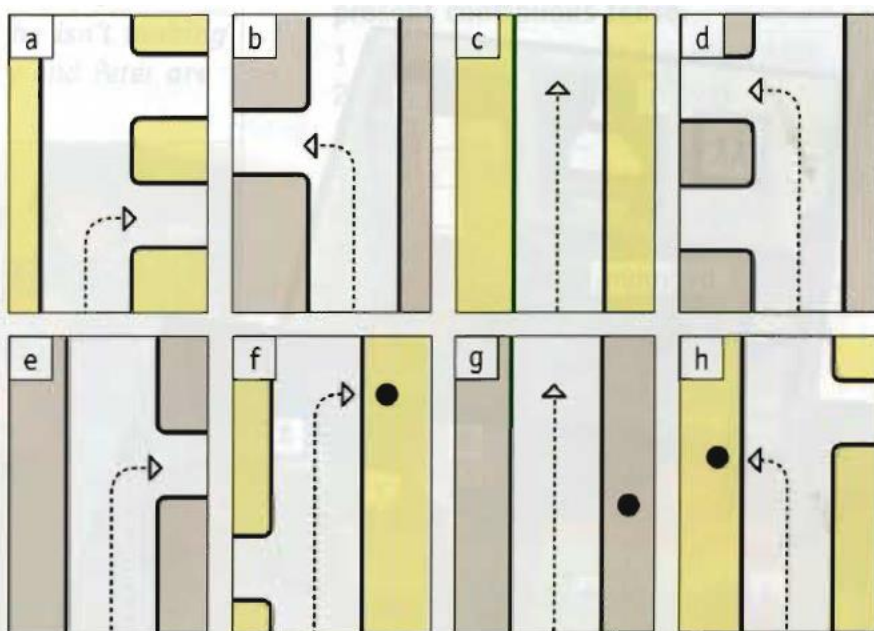
**Man** Excuse me. Is the bus station near here, please?

**Woman** Yes. Go down here. Take the second turning on the left. Go past the supermarket and it's on the right.

**Man** Thank you very much.



Połącz diagramy z wyrażeniami poniżej.



### Everyday expressions Giving directions

- \_\_\_\_\_ Go past ...
- \_\_\_\_\_ Turn right.
- \_\_\_\_\_ Turn left.
- a   Take the first turning on the right.
- \_\_\_\_\_ Take the second turning on the left.
- \_\_\_\_\_ It's on the left.
- \_\_\_\_\_ It's on the right.
- \_\_\_\_\_ Go down here.